

F A S H I O N F O L I O

BY -SOMA UKIL

# PROJECTS

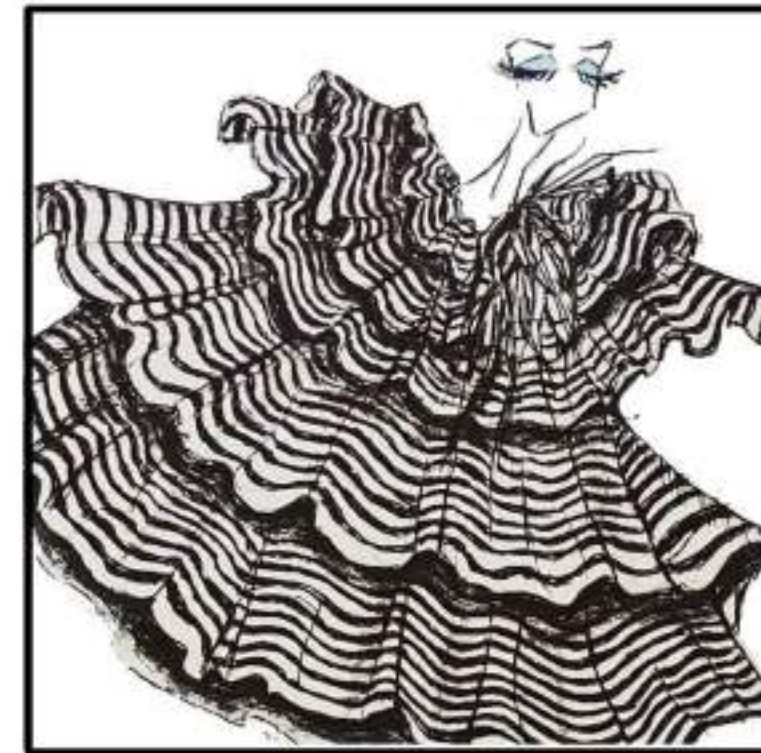
YEAR 2022



**1** DESIGN STUDIO  
PROJECT  
(WOMEN'S WEAR)



**2** CAPSULE  
COLLECTION  
(MEN'S WEAR)



**3** FASHION  
ILLUSTRATIONS



**4** SUSTAINABLE  
DESIGN  
PROJECTS

P  
R  
O  
J  
E  
C  
T

1

DESIGN STUDIO  
PROJECT  
(WOMEN'S WEAR)



A photograph of three models on a red carpet. The model on the left is wearing a bright red, long-sleeved, floor-length dress with a high collar and a matching red headpiece. The model in the center is wearing a similar red dress with a high collar and a matching red headpiece. The model on the right is wearing a red dress with a high collar and a matching red headpiece, and is holding a large, ornate red bag. The background is dark and out of focus.

AN ENSEMBLE DESIGN PROJECT ON THE  
THEME OF THE:

# MET GALA 2017

REI KAWAKUBO/COMME DES  
GARÇONS: ART OF THE  
IN-BETWEEN.

AVANT GARDE, RED CARPET,  
WOMEN'S WEAR



## DESIGN BRIEF AND THEME EXPLANATION

---

The concept of the ensemble is derived from the theme itself. After researching the theme of met gala 2017, "Rei Kawakubo/Comme des Garçons: Art of the In-Between," I came up with a Concept of fashion between the past and present. The silhouettes are exaggerated like how women dressed up in the Victorian era but it also has a modern element of today's fashion, the fabric choice for the ensemble also adds a futuristic essence to it, overall the look is like a bridge that is connecting the two different eras.





# RESEARCH / IDEATION



## About Rei Kawakubo :

- Rei Kawakubo (b. 1942) is a **Japanese fashion designer** based in Tokyo and Paris.
- She is the founder of **Comme des Garçons** and Dover Street Market. The designer incorporated the label in **1973**.
- She known for her very stunning **Avant-Garde conceptual designs**.
- Her fashions were featured in several exhibitions, including "Mode et Photo, Comme des Garçons" at the Pompidou Centre in Paris (1986), Claire McCardell, and Rei Kawakubo" at the Fashion Institute of Technology in New York City (1987), and "Rei Kawakubo/Comme des Garçons: **Art of the In-Between**" (2017) at the **Metropolitan Museum of Art in New York City**.

Absence/Presence

The concept of "in-betweenness" is reflected in the design of this exhibition—a collaboration between Kawakubo and The Met. Mu (emptiness) is suggested through the architectural leitmotif of the circle, which in Zen Buddhism symbolizes the void, and ma (space) is evoked through the interplay of structural forms. Ma expresses void as well as volume, a thing with and without shape—not defined by concrete boundaries. Amplified by the stark whiteness of the gallery surfaces, the visual effect is one of both absence and presence.

A prime example is the role of flowers—a recurring motif for the designer—which is explored in **War/Peace** through two collections: Flowering Clothes and its later "not clothes" counterpart, Blood and Roses. While the former focuses on flowers as positive symbols of energy, strength, and happiness, the latter mines their darker, more somber, and disturbing connotations. It addresses the historical significance of **roses as "connected with blood and wars . . . political conflict, religious strife, and power struggles."** **Roses and blood appear in both literal and abstract form,** and both are represented through the color palette—an unvarying, uncompromising poppy red.



o's that blur the initions of works  
bine Eastern id feminine these are id draping in e garments Western

Male/Female Child/Adult



War/Peace



Order/Chaos

In May 2019, Kawakubo received the Isamu Noguchi Award, making her the first fashion designer to receive the prize, which was created in 2014 to recognise innovative artists following in Noguchi's footsteps by bridging Eastern and Western cultures.

"Creation takes things forward. Without anything new there is no progress. Creation equals new."

Rei Kawakubo

Kawakubo also has a deep respect for history, however, and the dynamic between tradition and transgression is examined in **Order/Chaos** through her collection 18th-Century Punk. The clothes conflate the pneumatic structures and hyperbolic silhouettes of the 1700s with the leitmotifs of 1970s punk, including fetishistic hardware, harnesses, fastenings, and materials such as plastic in Pepto-Bismol pink. Their anachronistic employment of multicolored floral jacquards (not available until the 1800s), often pieced and collaged together, recalls an earlier punk-inspired collection, Adult Delinquent. At the time of its making, Kawakubo declared, "I am an adult delinquent to the end."

## # SECONDARY RESEARCH

### Met Gala 2017 Red Carpet:

The party was cochaired by Katy Perry, Pharrell Williams, and Anna Wintour, with Kawakubo serving as honorary chair, and the exhibit will be sponsored by Apple, Condé Nast, Farfetch, H&M, and Maison Valentino.



GIGI HADID IN asymmetrical Tommy Hilfiger nude dress



KATY PERRY IN MAISON MARTIN MARGIELA



RIHANNA IN COMME DES GARÇONS designed by Rei Kawakubo



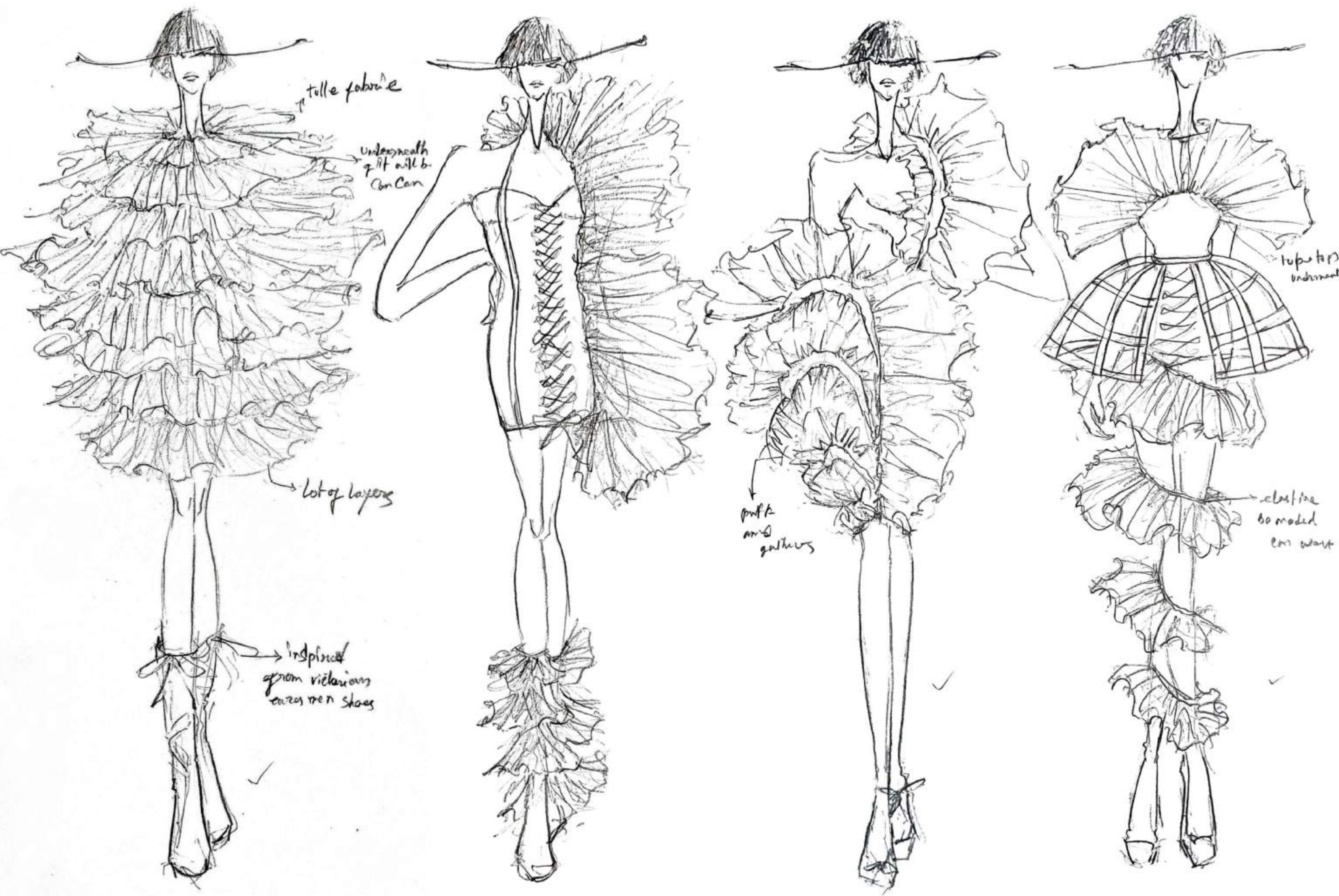
CONCEPT BOARD/ INSPIRATIONS

---

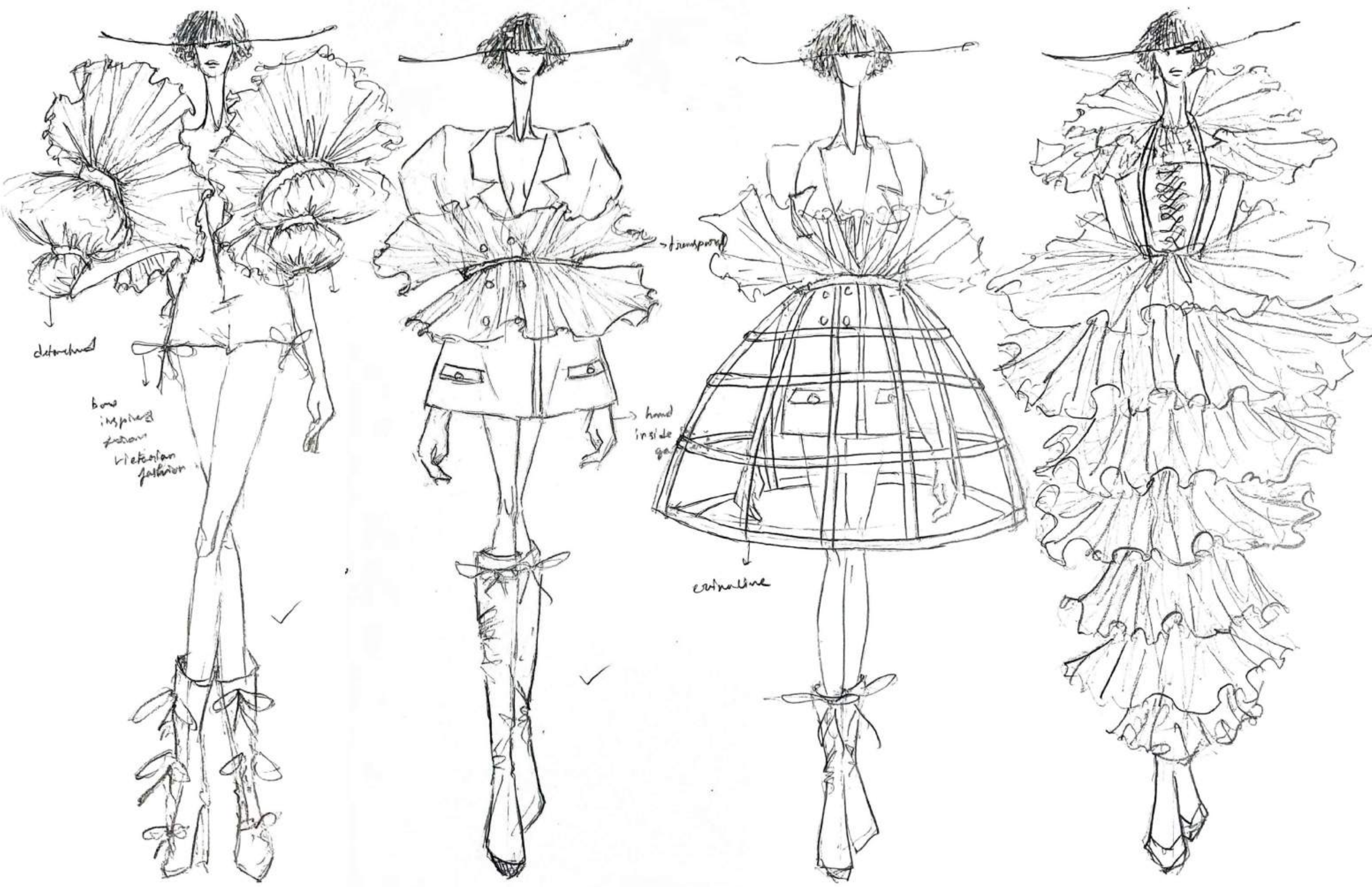
IN  
BETWEEN  
THEN  
AND  
NOW  
**FASHION**











detailed

bow inspired  
fashion  
Victorian  
fashion

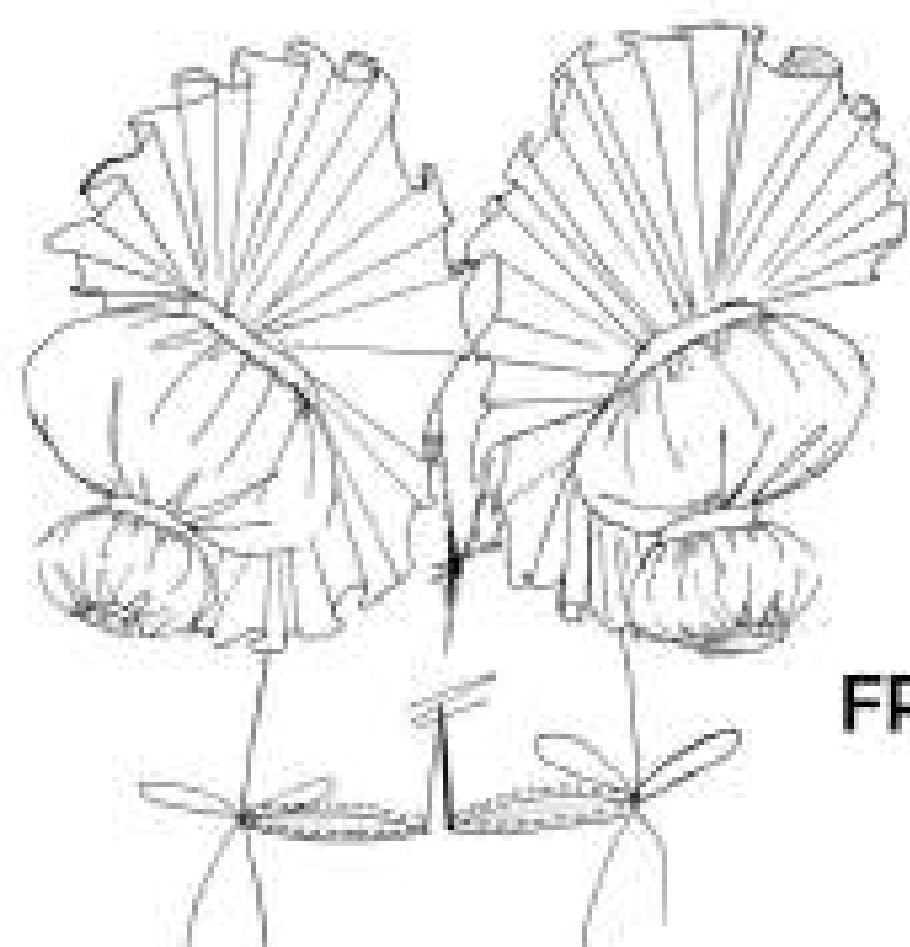
→ transparent

hand  
inside  
gaiter

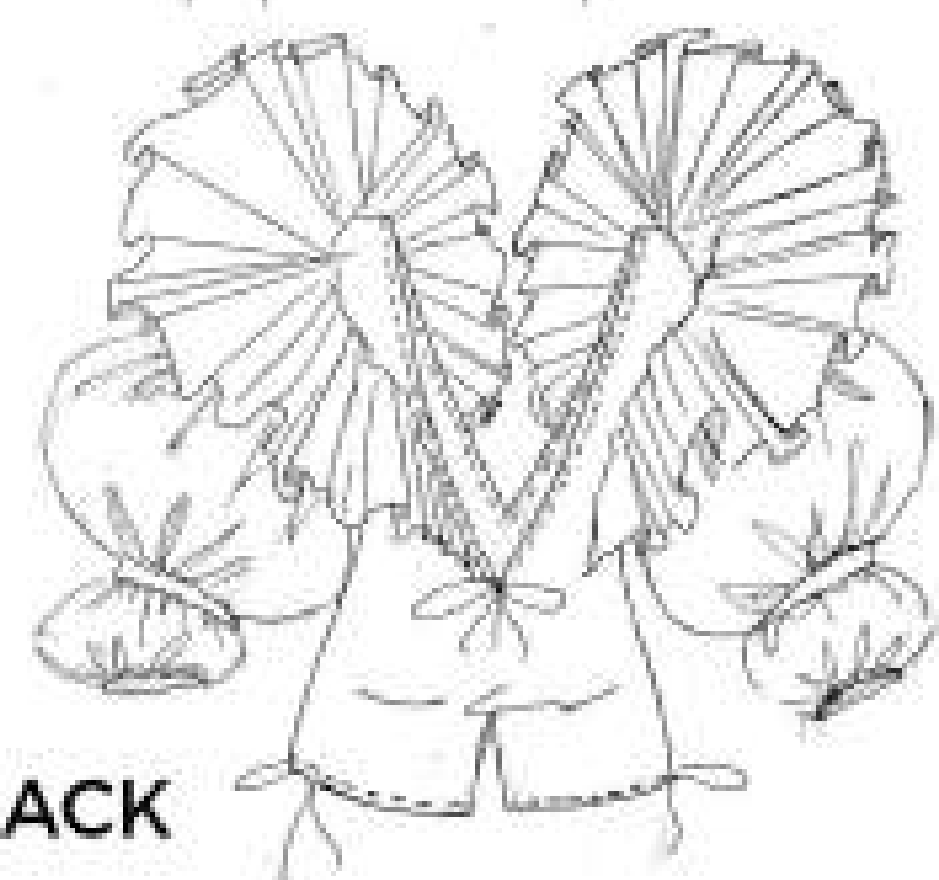
central line



FINAL ILLUSTRATION/ TECHNICAL  
DRAWING/ COLORS



FRONT



BACK



11-0602 TCX



12-4102 TCX



**Fabric:** hard net  
**Lining:** organza/ Tissue  
**Trims:** eyelets and laces  
**Color:** silver and gray



# GARMENT MAKING PROCESS



in The Skene  
I added  
one extra  
Puff section  
to make it  
more  
exaggerated

This How  
it's look  
after  
finishing all  
the process  
work

The  
romper  
I have  
given a  
organza  
fabric to  
avoid  
to much  
transparency





PHOTOSHOOT

---









P  
R  
O  
J  
E  
C  
T

2

CAPSULE  
COLLECTION  
(MEN'S WEAR)



BLACK IS EVERYONE'S FAVORITE COLOUR  
UNTIL IT COMES TO SKIN

# MELANIN

CAPSULE COLLECTION F/W 22

THE COLLECTION IS STRONGLY  
INSPIRED FROM THE THOUGHTS  
OF PEOPLES ABOUT COLOUR  
COMMUNITY AND HAVING SKIN  
CONDITIONS, THIS COLLECTION  
SHOWS THAT EVERY COLOUR IS  
BEAUTIFUL AND IT'S A  
CELEBRATION OF TRUE BEAUTY  
OF MELANIN.





# Inspiration board

Inspired from different shades and texture of human skin. The spots, colour tone and the emotions





# MELANCHOLY

## COLOUR & MOODBOARD

On this board, through the collage I tried to reflect the mood of the collection which is Melancholy. It is a feeling of pensive sadness, typically with no obvious cause. The color theme of the collection is inspired by natural human skin tones.





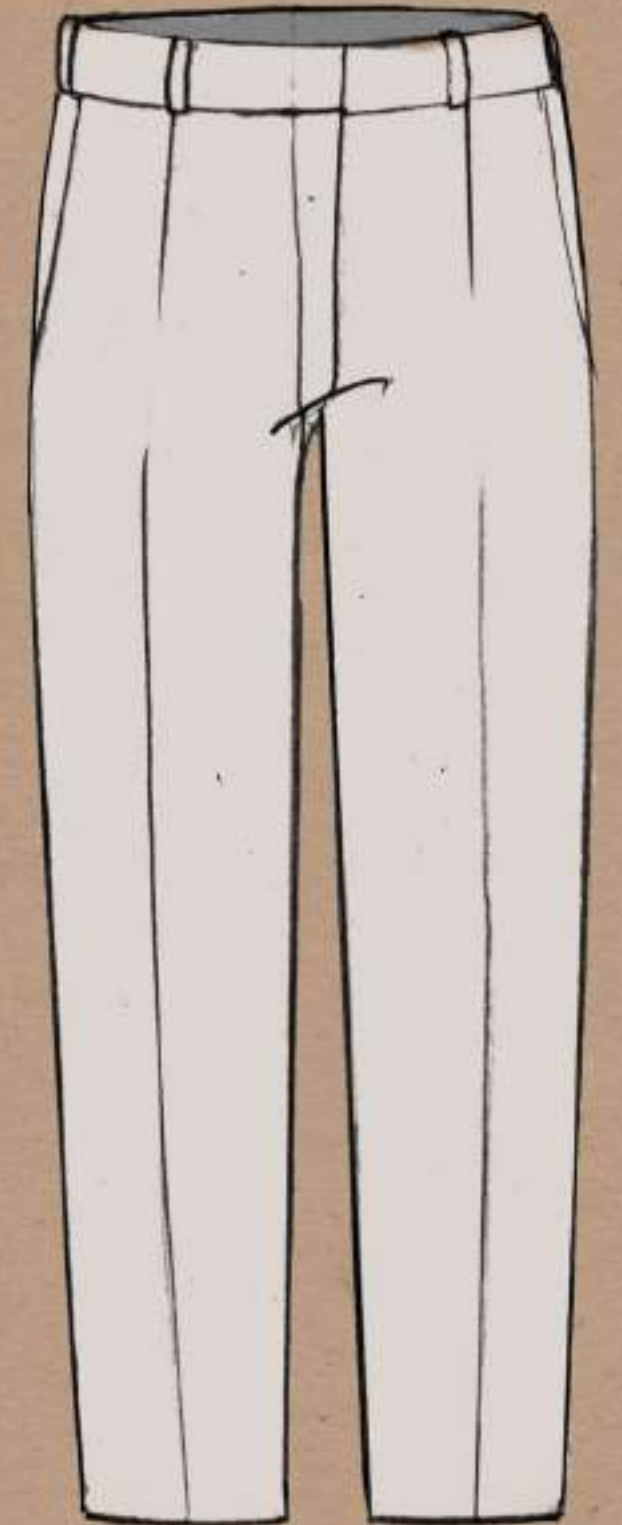
Print development













P  
R  
O  
J  
E  
C  
T

3

**FASHION  
ILLUSTRATIONS**

1. REALISTIC STYLE  
(HAND)
2. PRINT ON THE  
GARMENT (HAND +  
DIGITAL)
3. STYLIZED  
ILLUSTRATION
4. KIDSWEAR  
ILLUSTRATION (HAND+  
DIGITAL)







CAN WE  
WAKE UP NOW!

melting  
kolkata

WORLD'S NEW  
CLIMATE  
CHANGE!

IMPORTANT

both on the agenda  
been going around  
days. What are the

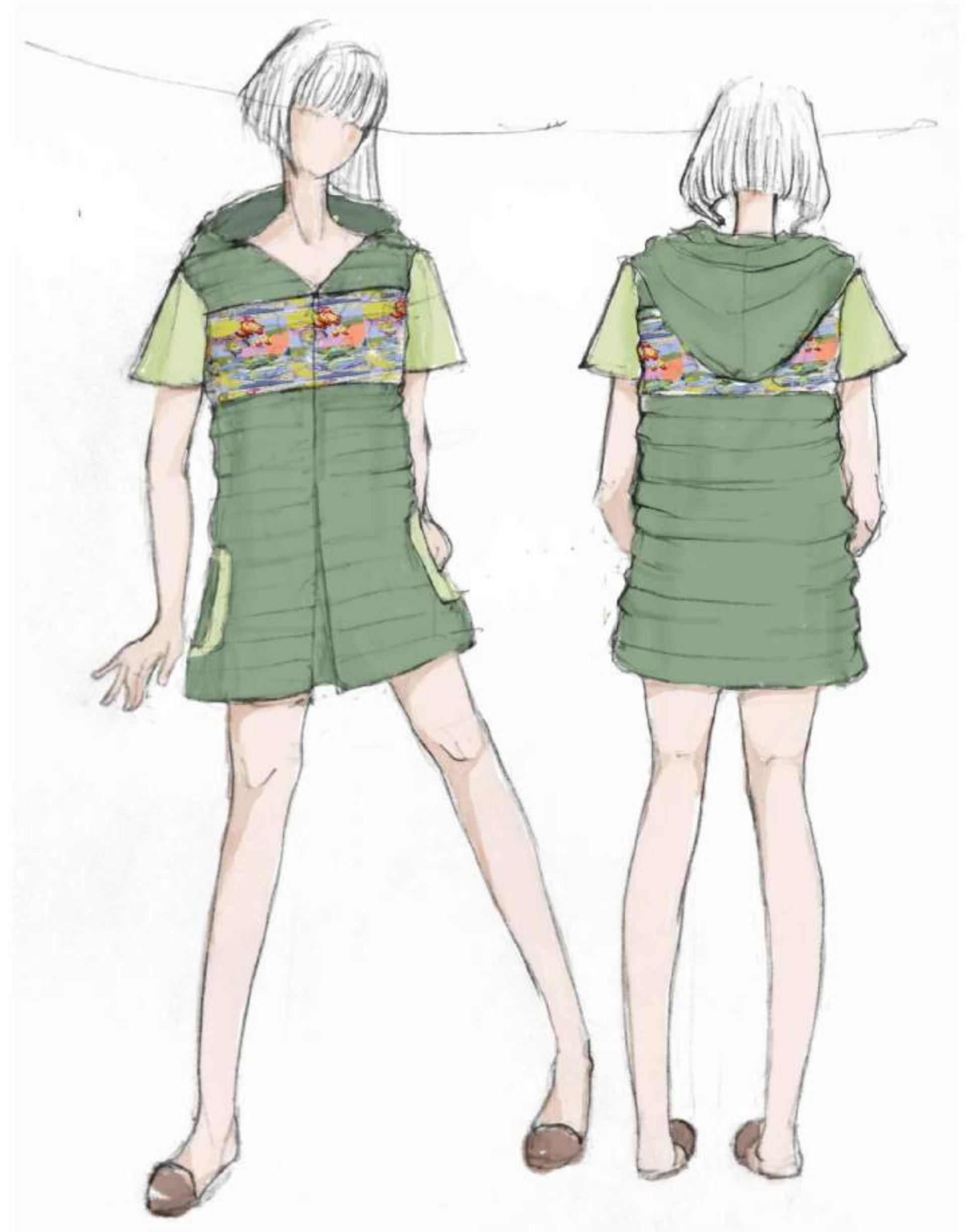
IT'S  
REAL













P  
R  
O  
J  
E  
C  
T

4

SUSTAINABLE  
DESIGN  
PROJECT



SUSTAINABLE  
DRAPPING  
PROJECT

# SAREE TO DRESS

USED A OLD  
SAREES DRAPED  
INTO A  
COCKTAIL  
DRESS.  
COMPLETELY  
ZERO WASTE







SUSTAINABLE DRAPING  
COMPETITION  
GROUND ZERO

## ABSTRACT ROSE

IT WAS A GROUP PROJECT, TWO DESIGNERS IN A GROUP. THE INSPIRATION BEHIND THE DRAPE WAS ROSE AND DHOTI (WHICH IS BASICALLY A GARMENT WORN BY MENS) THE CHALLENGE WAS TO DRAPE 3 MITERS OF MUSLIN WITH OUT WASTING ANY OF THE FABRIC. COMPLETELY ZERO WASTE AND SUSTAINABLE.



FIRST SEMESTER  
DESIGN STUDIO  
PROJECT

# ORIGAMI DRESS

INSPIRED BY INDUS  
VALLEY  
CIVILIZATION.  
THE UNICORN HEADS  
ARE MADE BY ORIGAMI  
METHOD.  
USED 100% COTTON TO  
MAKE THE DRESS AND  
HORNS ARE MADE OUT  
OF STRAW, WIRE AND  
TISSUE PAPER.





**THANK YOU**